

COMPLIMENTARY

# Festival of COUNTRY GARDENS

25 GARDENS FOR OUR 25TH YEAR!



**A GUIDE TO THE GARDENS OF SOUTH WEST WA**



# Spring

**NOVEMBER 2024 9.30AM TO 4PM**

**THURSDAY 31<sup>ST</sup> OCT FRIDAY 1<sup>ST</sup> SATURDAY 2<sup>ND</sup> & SUNDAY 3<sup>RD</sup> NOV**

**25 YEARS OF BEAUTIFUL COUNTRY GARDENS**

**BLACKWOOD VALLEY & SOUTHERN FORESTS REGION**

  FestivalofCountryGardens [www.festivalofcountrygardens.com.au](http://www.festivalofcountrygardens.com.au)

# Contents

- 3. Welcome
- 4. Weekend Events
- 5. Wander out Yonder Garden Tour

## Open Gardens

- 6. 🌿 20 Hillview Gardens
- 6. 🌿 25 Maranup Ford
- 6. 🌿 28 Melrose
- 6. 🌿 54 Windsor
- 8. 🌿 82 Sunnyhurst
- 8. 🌿 129 Cottonwood
- 8. 🌿 166 Lakeside Gardens
- 11. 🌿 167 Mattamattup
- 11. 🌿 195 Rivergums
- 11. 🌿 197 Dingup House
- 12. 🌿 201 Viet-Aussie Garden
- 12. 🌿 206 Winterfell
- 12. 🌿 209 Dairy Lane Garden
- 13. 🌿 212 Peninsula House
- 13. 🌿 216 Elysian Fields
- 13. 🌿 221 The Robins Nest
- 14. 🌿 227 Rose Have
- 14. 🌿 228 Karri Garden Retreat
- 14. 🌿 233 Digby Downs
- 15. 🌿 234 Blooms
- 15. 🌿 235 Ellmarose
- 15. 🌿 236 Woodhenge
- 16. 🌿 237 Abbotts Garden

## Sculptures and Wares

- 18. 🏠 232 Perrier Sculpture Park
- 19. 🏠 229 Salvation Jane



GOOGLE MAPS  
Scan the QR Code to see all  
our open gardens this Spring!



# Welcome

## Welcome to The Festival of Country Gardens, Spring 2024 - Our 25th Birthday!

Now in our 25th year for this wonderful event our Spring Festival is going to be the biggest and best one yet!

We have 25 private gardens scattered throughout the Blackwood Valley and Southern Forrester region. Some big, some small, some quirky and some formal but each and every one unique in their own way.

This festival our gardens range from Kirup right through to Pemberton with Balingup, Greenbushes, Bridgetown and Manjimup in between.

To encourage more gardeners to open and share their private oasis with the public, this year we have given our hard-working garden owners the choice to be open 2 days (Saturday 2nd and Sunday 3rd November) or 4 days (Thursday 31st Oct, Friday 1st, Saturday 2nd and Sunday 3rd Nov).

What gardens are open and on what days has been made very clear in our booklet so be sure to take a look. And while you are looking check out what else our gardeners have on offer - tea, coffee, Devonshire Teas, light lunches, plant sales etc just to name a few!

So come on down to our stunning pocket of the world and explore and delight and soak up the ambience of what these private gardens have to offer. We hope to see you there.



### WEEKEND PASS

Scan the QR Code to book your ticket online today!

### SINGLE GARDEN ENTRY FEE

Everyday for each garden

**\$8 PER PERSON**

PAYABLE AT GATE

PLEASE NOTE CASH ONLY

### FOUR (4) DAY WEEKEND PASS

Thursday, Friday, Saturday & Sunday

**\$100 PER PERSON**

AVAILABLE ONLY FROM

[WWW.TRYBOOKING.COM/EVENTS/LANDING/1262434](http://WWW.TRYBOOKING.COM/EVENTS/LANDING/1262434)

# Weekend EVENTS

## **Town Decorations**

As you meander around the streets of Bridgetown during the Festival, please take time to have a look at all the beautiful bright street art.

We have a wonderful team of volunteers led by Tracey that spend many months leading up to the Festival hand making these gorgeous bright flowers to decorate our town to make it delightful and fabulous!

Trying their best to use recycled materials wherever possible the Festival truly appreciate the hard work and enormous effort these volunteers put in to make our Festival of Country Gardens such a success.

## **Ashbil Gardens**

Make sure you have a wander through Ashbil Gardens on Saturday morning, enjoy a cuppa and chat to the wonderful volunteers who create and look after this Community Garden.





## **Wednesday 30th October 8.30am - 5pm**

Enjoy a tour of 4 beautiful private gardens. This tour is part of our iconic Spring Festival but these gardens are not featured in our Festival of Country gardens program.

We are “wandering” a little further afield this tour and we have some delightful gardens to share with you! You will not be disappointed...

You will be escorted around the Countryside by bus, enjoy a delightful morning tea, a scrumptious lunch stop and wine and cheese to finish off the day.

All while meandering your way through our 4 gardens.

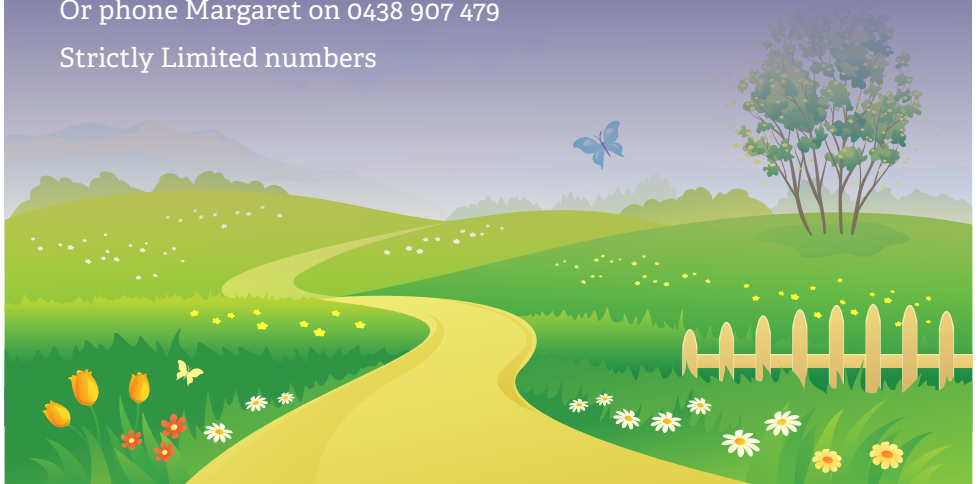
Tickets never last long to this sort after event. Get in quick.  
Price \$195 per person (inclusive of everything)

### **BOOKINGS THROUGH**

[www.trybooking.com/events/landing/1262434](http://www.trybooking.com/events/landing/1262434)

Or phone Margaret on 0438 907 479

Strictly Limited numbers





# Open Gardens



## #20 Hillview Gardens

706 Perup Road **Manjimup**

**Carolyn Cabassi & Garry Giblett**

**Contact: 0428 297 107**

Hillview Gardens 35 years ago in a bare paddock. It now consists of 4 acres of garden rooms divided by 250 roses, unusual and hard to find perennials, conifers and deciduous trees. Rolling lawns and parkland make up this garden. This is truly a gardeners garden.

*Every visitor to this garden will receive a 10% discount voucher on a one off total purchase in the month of November at Hillview Garden Centre.*

Days Open	4
Plants	Yes
Accommodation	-
Toilet	-
Wheelchair	-
Morn/Afternoon Tea	Yes
Tea & Coffee	-
Light Lunches	Yes

## #25 Maranup Ford

600 Maranup Ford Rd **Maranup Ford**

**Melva & Hugh Brown. Contact: 0429 611 200**

Our garden was one of the gardens in the First Festival, come and see how it has developed over the years, Expect to see colour themed garden rooms filled with cottage garden flora, roses, iris, ponds etc, and our latest project the Japanese themed garden. There is a large Australian garden attracting birds and an interesting tree collection.

**DIRECTIONS:** Directions from Bridgetown. 12 Brockman Highway, turn right onto bitumen Maranup Ford Road. 6 km to 600 Maranup Ford Road. Sign on right. From Bunbury. 2nd turn into Greenbushes, straight through town to Maranup Ford Road. 13km from highway. Over Maranup Ford Bridge and entrance is 100 metres on the left.

*Guided walk & morning tea each day at 10am. \$20pp with proceeds to R.F.D.S. Bookings 0429 611 200. CARAVAN PARK 0448 600 190*

Days Open	4
Plants	Yes
Accommodation	Yes
Toilet	Yes
Wheelchair	-
Morn/Afternoon Tea	Yes
Tea & Coffee	-
Light Lunches	-



# 2024 SPRING FESTIVAL

## #28 Melrose

**Robin & Anne Palmer**  
**Contact: 0400 086 260**

A Magical Place

This small 2 year old cottage garden is full of charm. In its element in spring with approximately 50 roses, beds packed with annuals, perennials, fruit trees, raised vegetable beds and an orchid shade house. Climbing plants entwine veranda posts. This riotously colourful display surrounds a lush green manicured lawn

24 Allnutt Street **Bridgetown**

Days Open	4
Plants	Yes
Accommodation	-
Toilet	Yes
Wheelchair	-
Morn/Afternoon Tea	-
Tea & Coffee	Yes
Light Lunches	-

## #54 Windsor

**Stephen & Laurie Bullied**  
**Contact: 08 97611676**

Windsor is a 4-acre garden located in a lovely setting on the Blackwood River. The garden, like all gardens, is a work in progress. Parts are well established, and parts are newly planted. It's a beautiful place to amble around for half an hour or so.

**DIRECTIONS:** Windsor is on Eedle Terrace and is one kilometre from the highway. It is on the left-hand side of the road overlooking the river. Enter by the Black Barn Studio parking area.

7 Eedle Terrace **Bridgetown**

Days Open	4
Plants	Yes
Accommodation	-
Toilet	-
Wheelchair	-
Morn/Afternoon Tea	-
Tea & Coffee	-
Light Lunches	-

*ART WORK FOR SALE*

## #82 Sunnyhurst Winery

16 Doust Street **Bridgetown**

**Geoff Herbert & Marie-Pierre Dussault**

**Contact: 0437 846 610**

Hundreds of heritage roses, fruit trees, annual and perennial cottage plants. The garden has developed organically with space being made for yet another spontaneous purchase. A quintessential grass tennis court surrounded by a stunning array of climbing roses is overshadowed by a majestic centenary Moreton Bay fig.

Enjoy views of the Blackwood and Mattamattup undulating valleys over the vineyard.

**DIRECTIONS:** From SW Hwy, turn into Steere Street. Before Clovers store, turn right into Gifford Rd. Continue to Greys Hill Rd and down to the river valley. Turn left into Mattamattup St. Then right into Doust St. Continue past the Sunnyhurst Chalets to Sunnyhurst Winery at the top of the hill (If you go another 100 metres to the cul-de-sac there is a magnificent view of the valley)

Days Open	4
Plants	-
Accommodation	-
Toilet	-
Wheelchair	-
Morn/Afternoon Tea	-
Tea & Coffee	-
Light Lunches	-
WINE FOR SALE	

## #129 Cottonwood

40 Walter Road **Bridgetown**

**Tony Arnold.**

**Contact: 0455 434 284**

A sweeping parkland style garden featuring an avenue of mature cottonwood trees. Gabion and coffee rock walls, a pond lined with granite moss rocks and featuring a waterfall. A large lake with a walkway over the water and gazebo. Perennials, shrubs, a variety of deciduous trees, camellias, paulownias, mauve wisteria and roses.

Days Open	4
Plants	-
Accommodation	-
Toilet	Yes
Wheelchair	Yes
Morn/Afternoon Tea	-
Tea & Coffee	Yes
Light Lunches	-

## #166 Lakeside Gardens

188 Plackett Drive **Pemberton**

**Sally & Charles Rethon. Contact: 08 9776 0993**

Over the past 18 years our 6 acre garden has evolved from a blank canvas to one filled with maples, birches, many rare plants, large native garden, bromeliad and aloe garden, hydrangeas and roses. Garden art, meandering paths with benches, stream edged with water loving plants flowing into the large lake. Birds and bees abound.

**DIRECTIONS:** From SW Highway heading towards Walpole turn right onto Vasse Highway towards Pemberton travel 12 km turn left into Browns Road, travel 1 km turn left into Plackett Drive and Lakeside is about 400 m on the left. Coming from Pemberton travel 1 km and turn right into Browns road, travel 1.88 km and Lakeside is on the right. There will be signage at the gate.

Days Open	2
Plants	Yes
Accommodation	-
Toilet	Yes
Wheelchair	-
Morn/Afternoon Tea	Yes
Tea & Coffee	Yes
Light Lunches	


**DEVONSHIRE TEAS \$5 PER PERSON.**



**Blackwood Valley**  
**The Cidery**  
**Brewing Company**

- Fresh Natural Ciders
- Award Winning Beer
- Craft Gin & Liqueur
- Wholesome Food

**Live music**  
**Fridays**  
**5.30-7.30pm**

43 Gifford Road, Bridgetown  
**(08) 9761 2204 • Open 7 days a week**  
**www.thecidery.com.au** 

Saturday to Thursday: 11am - 4pm, Friday: 11am - 8pm  
 Lunch: 11.30am - 2.30pm weekdays, til 3.30pm weekends  
 Closed Good Friday, Christmas, Boxing & New Year's Days

*Life is short - Drink the Best!*



**slow grow project**

We are hosting a series of beautiful, grounding creative workshops in Bridgetown during the festival

More details available at:  
<https://www.slowgrowproject.com/creative-huddles>

*Perrier*

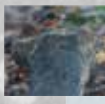
# Sculpture Garden

Kim Perrier is a National and International Award winning Sculptor. Marie and Kim created massive rock gardens featuring a great variety of plants, shrubs and trees.



[www.perrier.com.au](http://www.perrier.com.au)

Vistors are welcome to explore the 35 year old gardens framed in rocks and waterfalls and discover over 30 Sculptures.



Meet Margaret Beechey Rothery and discover her amazing Bronze Horse sculptures. She started sculpting at 91 and at 93 was featured on the ABC National News on Christmas day 2023.

**2 Dreyfus Street Bridgetown**  
**Open 7 days a week and Spot lit at night.**

# FORD HOUSE - SPRING FAIR

## BRIDGETOWN GARDEN FAIR

Sunday 3rd November 2024 8.30 am - 3.00pm

Ford House, Eedle Terrace, Bridgetown

There will be plant specialists, art, garden sculpture, delicious coffee and food to indulge in.

We would love for you to come to this fantastic event.

**\$5 ENTRY FEE**

Children are free and dogs must be on leads.

**Ford house B&B & Wag Walters Emporium**

☎ (08) 9761 1816 ✉ relax@fordhouse.com.au 🌐 fordhouse.com.au

📍 Ford House Farden Fair Bridgetown WA



**Clovers General Store**  
7 Days ~ 7am-7pm Tel: 9761 1233

Loads of lovely local produce!  
Gourmet Cheese, Honey's, Jam's,  
Crackers, Condiments, just to mention a few!  
As well as staple grocery items  
including Fruit & Veg

**Clovers Liquor Store:**  
Monday-Saturdays 10am-7pm  
Tel: 9761 2017

Huge selection of LOCAL WINES of  
the SOUTHWEST & GREAT SOUTHERN  
Plus many more Australian  
& New Zealand Wines  
Plus LOCAL CRAFT BEERS & CIDERS  
Plus! Great selection of WHISKIES & GINS

Corner Steere St &  
Gifford Rd Bridgetown  
Caravan Friendly Parking

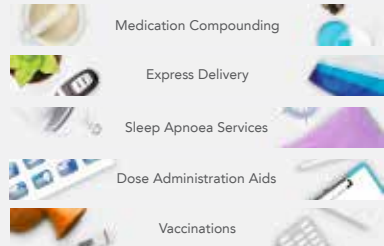


Pharmacy **777** Bridgetown

OPEN EVERY DAY 8AM - 7PM

Proudly *supporting* the  
Bridgetown *community*.

We're passionate about making a difference to  
your quality of life. Some of our *personalised health  
and support services* include:



Visit 127 Hampton Street, Bridgetown  
Call 08 9761 1004 | E [bridgetown@pharmacy777.com.au](mailto:bridgetown@pharmacy777.com.au)  
[pharmacy777.com.au](http://pharmacy777.com.au)

## #167 Mattamattup

257 Campbells Road **Kangaroo Gully**

**Dennis & Cheryl Wilson**

**Contact: 0427 617 524 / 0409 979 523**

Mattamattup” previously a commercial orchard now transformed into a garden of 400+ roses, day lilies, irises, natives, cottage plants, established cork oak & deciduous trees. Climbing roses rambling amongst farm machinery & recycled bed heads. Rock walls, garden beds & paths created from local rock. Resurrected post and rail fencing & metal garden art sculptures. Circa 1916

DIRECTIONS: 5 kilometres East of Bridgetown. From Kangaroo Gully Road, left into Campbells Road for approximately 1.5kms.

*METAL SCULPTURES FOR SALE.*

Days Open	4
Plants	Yes
Accommodation	-
Toilet	Yes
Wheelchair	Yes
Morn/Afternoon Tea	Yes
Tea & Coffee	Yes
Light Lunches	

## #195 Rivergums

57 Grimwade Road **Balingup**

**Di Whincup. Contact: 9764 1130**

A tranquil, natural, artistically designed garden of 4.5 acres with three defined areas.

1. Surrounding the house is a colour coordinated cottage garden of natives and hardy exotics.
2. Permanent creek with four ponds, rain forest and water lilies. Many shady deciduous trees over grassed area.
3. A zig zag path meanders through a Cork Tree Forest leading to hilltop views.

Over 250 deciduous trees, sculptures and art work.

Days Open	2
Plants	-
Accommodation	-
Toilet	Yes
Wheelchair	Yes
Morn/Afternoon Tea	-
Tea & Coffee	-
Light Lunches	-

## #197 Dingup House

269 Dingup Road **Manjimup**

**Chris Utech. Contact: 0407 193 231**

The 155 year old rambling homestead and beautiful gardens are a hidden gem of old Australian charm situated in the gateway to the Southern Forests of WA. The lovely expansive gardens boast 100-year-old trees of all varieties, such as cypress and elms.

A driveway lined with majestic Lemon scented Salmon Gums.

View Old world roses, fruit trees and a Vegetable garden to provide fresh produce to our guests.

Days Open	4
Plants	-
Accommodation	Yes
Toilet	Yes
Wheelchair	Yes
Morn/Afternoon Tea	Yes
Tea & Coffee	Yes
Light Lunches	Yes

## #201 Viet-Aussie Garden

39 Telluride St **Greenbushes**

**Norman & Kim Renshaw**

**Contact: 0429 130 174**

Perennials, annuals, creepers, roses, shrubs, banana trees, fruit trees & ferns. Vietnamese small boats called Thuyen Hoa, mountains & mystery to reflect Halong Bay. A bridge called Cau Anh Sao as it lights up at night. A colourful spring garden that comes alive with birds and bees which makes for a happy garden.

**DIRECTIONS:** From Balingup continue on the South West Hwy & turn right into Greenbushes, then right at fourth St. Proceed to Tourmaline St. Our house is on the left hand side corner of Tourmaline and Telluride Streets.

Days Open	4
Plants	Yes
Accommodation	-
Toilet	Yes
Wheelchair	-
Morn/Afternoon Tea	-
Tea & Coffee	Yes
Light Lunches	-

## #206 Winterfell

21 Charolais Close **Bridgetown**

**Bert & Jan Jansen. Contact: 0418 755 122**

A passion for cacti led to us establishing an arid garden.

Our garden has a variety of aloes, agaves, cactus, succulents and euphorbia as well as some unique sculptures.



Days Open	2
Plants	Yes
Accommodation	-
Toilet	-
Wheelchair	-
Morn/Afternoon Tea	-
Tea & Coffee	-
Light Lunches	-

## #209 Dairy Lane Garden

10 Dairy Lane **Bridgetown**

**Don & Ingrid Barker. Contact: 0432 105 754**

Dairy Lane Garden has a Japanese influence, featuring many bonsai displayed throughout, a waterfall style rock pond, rock walls, espaliered camellias, ornamental deciduous trees as well as exotics, native and produce plantings.

Demonstrations on the fascinating art form of bonsai will be held on Saturday and Sunday at 11am.

**DIRECTIONS:** Please park on Somme St and walk up Dairy Lane. No 10 is on the right hand side.

Days Open	2
Plants	-
Accommodation	-
Toilet	Yes
Wheelchair	Yes
Morn/Afternoon Tea	-
Tea & Coffee	-
Light Lunches	



## #212 Peninsula House

767 Peninsula Road **Bridgetown**

**Jeremy Scudds & Lindy Porter**

**Contact: 0411 668 222**

The garden features an historic homestead on a working farm, with an event venue, alleyways of roses, a lake, bridge, new ornamental trees, pathways, fire pit, wishing well, folies and vegetable garden/orchard. Flowers include roses, water lilies, bougainvillea, natives, wisteria and perennials.

It is 7 kilometres from Bridgetown and includes a gravel road descending into a valley [caution].

Days Open	4
Plants	-
Accommodation	-
Toilet	Yes
Wheelchair	Yes
Morn/Afternoon Tea	-
Tea & Coffee	-
Light Lunches	-

## #216 Elysian Fields

42 Nelson Street **Bridgetown**

**Wallace McNamara & Teresa Schofield**

**Contact: 0478 627 438 / 0429 343 360**

A 2 acre manicured property, mostly unseen from the front, situated in Bridgetown.

Transformed in a short time from blue gums, blackberries and scrub into expanses of lawn, garden beds, fruit trees, ground covers, deciduous trees, native plants and raised garden beds.

The key feature, unsighted from the front of the property, is a large lily covered spring on the creek that traverses the rear of the property.

Days Open	4
Plants	-
Accommodation	-
Toilet	-
Wheelchair	Yes
Morn/Afternoon Tea	-
Tea & Coffee	-
Light Lunches	-

## #221 The Robins Nest

5 Giblett Road **Bridgetown**

**Robert & Robyn Robb**

Winding paths guide you through this lovely garden. Relax under the camphor laurels or wander paths dotted with birch, maple, elm and other trees.

Perennials, cottage favourites and roses are the main focus with many 19th century French roses. Garden sculptures add whimsy as do Victorian style obelisks.

DIRECTIONS: From Hampton St turn into Steere St and follow road to top of the hill. Turn right into Giblett Rd with garden coming into view on your right.

Days Open	4
Plants	Yes
Accommodation	-
Toilet	-
Wheelchair	-
Morn/Afternoon Tea	Yes
Tea & Coffee	Yes
Light Lunches	

**NOTE** Devonshire teas & pavlova for a fee.

Large range of plants & craft stall. Iris & day lillies sales on Sat only



## #227 Rose Haven

**Leigh & Christine Wilson**

**Contact: 08 9731 6611**

Rose Haven has been 18 years in the making. There are a number of mature trees including maples, Prunus, birch and swamp cypress as well as a large dam with a gazebo. 500+ roses and shrubs are planted in and around arbors and pergolas. There is a collection of farm machinery as well as a fruit and vegetable section.

**DIRECTIONS:** Turn off South West Highway into Ravenscliffe Road then right into Castle Street 2 km from the highway

101 Castle Street **Kirup**

Days Open	4
Plants	-
Accommodation	-
Toilet	Yes
Wheelchair	Yes
Morn/Afternoon Tea	-
Tea & Coffee	Yes
Light Lunches	-

## #228 Karri Garden Retreat

133 Browns Road **Pemberton**

**Ted Thacker & Margo Halbert**

**Contact: 0402 117 700**

Built over 5 acres we have a beautiful country garden now nearly 12 years old and looking amazing. Rolling lawns with gardens full of exotic trees and plants. Located next to a Karri forest facing north overlooking a dam. We hope you will enjoy.

Days Open	2
Plants	-
Accommodation	-
Toilet	-
Wheelchair	-
Morn/Afternoon Tea	-
Tea & Coffee	-
Light Lunches	-

## #233 Digby Downs

30 Walter Road **Bridgetown**

**Kaye Dorian. Contact: 0419 918 657**

Undulating green parklands and gardens set amongst ancient trees and bird/bee attracting habitat. An unexpected hidden oasis of calm, with palms and ferns in a tropical micro climate, bordered by wetlands with a winding creek and a winter waterfall.

The parklands and gardens overlook lakes with a variety of seating areas to enjoy the views.

Days Open	4
Plants	-
Accommodation	-
Toilet	-
Wheelchair	-
Morn/Afternoon Tea	-
Tea & Coffee	Yes
Light Lunches	-

## #234 Blooms

### *Jennifer Coales*

Blooms is a fragrant old world garden with a rich mix of roses, daphne, clematis and much more.

Less than two minutes from the town centre you can enjoy flowering trees, a vineyard while enjoying tea or coffee in the gazebo overlooking gorgeous views and our horses.



31 Dean Street **Bridgetown**

Days Open	2
Plants	-
Accommodation	-
Toilet	-
Wheelchair	-
Morn/Afternoon Tea	-
Tea & Coffee	Yes
Light Lunches	-

## #235 Ellmarose

### *Jim & Ruth Silvester*

**Contact: 0400 993 637**

A small romantic cottage garden. We moved into a 125 years old stone cottage with a depleted garden 3 years ago and replaced the lawn with a cottage garden including roses, day lilies, perennials, annuals, natives, vegetable wicking beds, ancient grape vines and fruit trees.

The beginnings of a garden journey.

33 Gifford Road **Bridgetown**

Days Open	2
Plants	-
Accommodation	-
Toilet	-
Wheelchair	-
Morn/Afternoon Tea	-
Tea & Coffee	-
Light Lunches	-

## #236 Woodhenge

### *Stacey Applin. Contact: 08 9761 1404*

A resilient property with a diverse, mostly dry garden. Features include a permaculture-inspired setup with rotational chook pen and veggie garden, former netted orchard. Bird corridors, woodlot with an understory, dams with water-edge plants, Cottage Garden, the makings of a Japanese garden, succulents, native plants, garden art and much more to explore.

DIRECTIONS: Davies street is the first left off Brockman HWY and my driveway is the first right.

10 Davies Road **Bridgetown**

Days Open	4
Plants	Yes
Accommodation	-
Toilet	-
Wheelchair	-
Morn/Afternoon Tea	-
Tea & Coffee	Yes
Light Lunches	-

## #237 Abbotts Garden

43 Wilkins Road **Bridgetown**

**Deon & Barbara Abbott**  
**Contact: 0474 370 188**

A large garden specializing in rare, endangered and local native plants. Other plantings include a fruit salad orchard, a variety of deciduous and evergreen trees, camellias. There is also a bush tucker garden and a succulent/ cacti garden. Meandering pathways with great views to Bridgetown.

*NATIVE PLANTS FOR SALE.*

Days Open	2
Plants	Yes
Accommodation	-
Toilet	Yes
Wheelchair	-
Morn/Afternoon Tea	-
Tea & Coffee	-
Light Lunches	-



## ASHBIL COMMUNITY GARDEN

17 STEWART STREET, BRIDGETOWN

Stretched along the edge of the old railway, parallel to the main road, Ashbil Community Garden is an excellent example of what can be achieved when people get together to work in a transformative way. What was once a barren strip of stoney wasteland is now a productive, healthy produce garden. The work here began 12 years ago and since then the garden has drawn in countless locals to learn, share, garden and build friendships.

You are welcome to visit at any time and see what we are up to. While you are there be sure to check out our "bush tucker" garden, our gorgeous chooks and have a peek at our excellent composting system!

We will have a kettle on the boil and morning tea treats available during the morning, so if you'd like to come along for a cuppa and a chat, we'd be happy to meet you.



## PROUD SUPPORTERS OF THE FESTIVAL OF COUNTRY GARDENS



The Festival of Country Gardens would like to give a big thanks to our local Rotary Club for their generous support to our Club!

It is truly appreciated.  
Thank you.

# **RICHFEEDS**

## **AND RURAL SUPPLIERS**

Family owned and operated for over 25 years.

Your local agents in Bridgetown and surrounding areas for all your rural needs.

- Drench
- Vaccine
- Stockfeed
- Livestock Supplements
- Ag-Chem
- Lime
- Fertiliser
- Fencing
- Fittings
- Pumps
- Firefighting
- Water Tanks



**Phone: (08)97611520 Email: [sales@richfeeds.net](mailto:sales@richfeeds.net)**

# Sculptures and Wares

*Don't miss the chance to explore local gardens, art, and sculptures, where creativity and nature beautifully intertwine.*

## #232 Perrier Sculpture Park

2 Dreyfus St **Bridgetown**

**Kim & Marie Perrier**

**Contact: 0418 611 130 / 0467 421 782**

In 1990 Marie and Kim purchased a run down apple orchard and transformed it into a unique Rock and Waterfall garden. The 'Weeping Mulberry Stone Garden' hosts a diverse collection of shrubs, succulents and exotics. Additionally, the new garden features 30+ sculptures, making it a distinctive and inspiring destination.

Days Open	4
Plants	-
Accommodation	-
Toilet	-
Wheelchair	-
Morn/Afternoon Tea	-
Tea & Coffee	-
Light Lunches	-





## #229 Salvation Jane

83 River Road **Bridgetown**

*Jane Bell.*

**Contact: 0400 209 313**

Quirky French Artists garden. I bought my 3 & ½ acre property 14 years ago. It was a dilapidated house in the middle of a paddock. Plenty of opportunity to unleash my creative spirit and love of colour and gardening. Also, an eclectic collection of vintage homewares and garden-ware will be available to purchase.

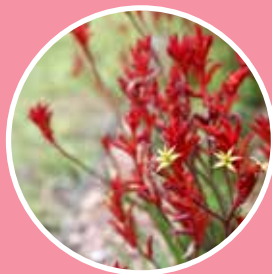
Vintage home & garden wares for sale

<b>Days Open</b>	4
<b>Plants</b>	-
<b>Accommodation</b>	-
<b>Toilet</b>	-
<b>Wheelchair</b>	Yes
<b>Morn/Afternoon Tea</b>	-
<b>Tea &amp; Coffee</b>	-
<b>Light Lunches</b>	-





# Hillview GARDEN CENTRE



*Beautiful garden centre in a beautiful town*

Come in and browse our huge selection of native plants, ornamentals, shrubs, flowering plants and trees. We also stock a large range of garden ornaments, pots and water features.

Everything you need for your next garden project is available at the Hillview Garden Centre.

If you need help, just ask our friendly and experienced staff.

*Contact Carolyn today*

**Carolyn Cabassi - PHONE** (08) 9761 1672

**MOBILE** 0428 297 107 **EMAIL** fourgibbo@westnet.com.au

---

[www.hillviewgardeningandlandscaping.com.au](http://www.hillviewgardeningandlandscaping.com.au)